

City News

Published for the citizens of Philomath, Oregon
Autumn 2008



Autumn Tidings in the City

PLEASE DO NOT FEED

Recent news coverage regarding flocks of wild turkeys taking up residence in the northwest part of our city has placed the City Council in the familiar stuck predicament of being between a rock and a hard place.



Citizens upset with the presence of the turkeys brought the matter before the Council and asked for assistance. The Council sought out advice from the Oregon Department of Fish & Wildlife, distributed information within the affected neighborhoods on the consequences of feeding turkeys, and asked citizens to voluntarily refrain from feeding the turkeys.

While most residents were understanding and agreed to stop feeding, some have refused, thus ensuring that the turkeys will remain. The only option that ODF&W would approve was to allow a limited number of turkeys to be shot by a city police officer in an attempt to disperse the flocks and encourage them to move back into the surrounding forests.

The City Council will soon consider adoption of a new ordinance prohibiting the feeding of wildlife within the city limits. This action will hopefully have a more direct impact on eliminating the flocks from residential areas.

The message here is not a new one. Feeding wildlife is not in the best long-term interests of the animals. Artificial feeding concentrates populations making disease transmission more likely, alters natural foraging behaviors, and creates a host of urban/wildlife conflicts that are generally resolved in a manner where the animals suffer the most.

If you truly enjoy wildlife and have their best interests at heart, do not feed them.

FALL LEAF PICKUP



In late autumn each year, fallen leaves that have been raked and properly stored will be picked up and hauled away at no cost by Allied Waste. This year, the weeks of **November 24 and December 8** have been scheduled for Philomath leaf pick-up.

Here are a few suggestions to help make this program successful:

- Piles of leaves only will be hauled away. Piles containing lawn clippings, tree branches, debris, etc. will be left behind.
- Don't store leaves in gutters or on sidewalks. Move the leaves to the street the night before - this is important to prevent flooding in your neighborhood caused by

leaves clogging the storm water collection system at catch basins.

- Park vehicles at least 15 feet from piles to allow sufficient room for equipment to operate safely.

SEWER PROJECT PROGRESSES

The rehabilitation of Philomath's original sanitary sewer collection system continues to proceed on schedule. The current phase of this long-term project is generally focused on the areas from Applegate Street to Pioneer Street between 12th and 19th Streets. The contract to repair deteriorating 1950's concrete sewer mains utilizes technologies not used in Philomath before. In addition to the traditional digging of trenches to place new pipes, two newer methods of repairing pipes that do not require open street digging will be used to minimize inconvenience to homeowners and avoid street repairs.



Approximately 50% of the project has been completed with a project end date to finish this phase by the end of November. Funding for this work comes from the City Urban Renewal Agency and is being accomplished without levying additional property taxes or increasing sewer fees.

It's up to you**ANNEXATION UP FOR NOVEMBER VOTE**

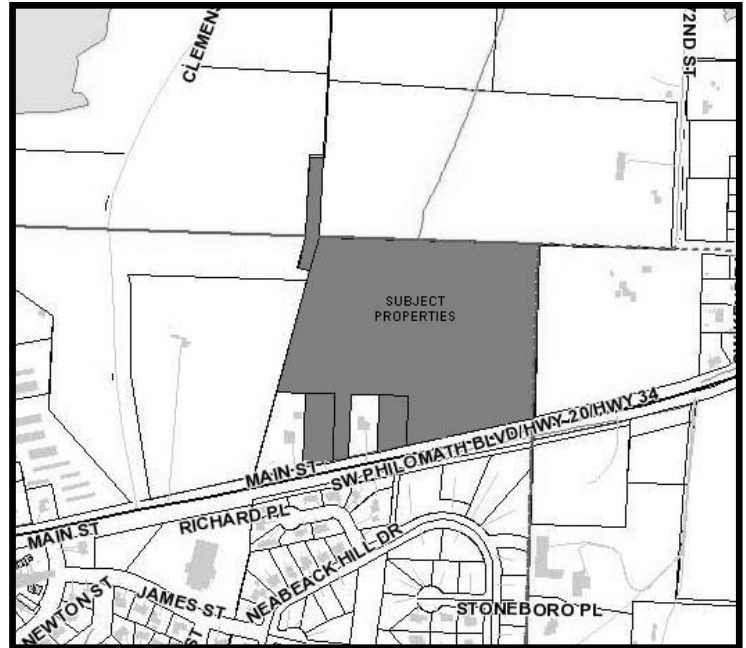
The City Charter requires that annexation to the City may only be approved by a majority vote of Philomath voters. In accordance with this requirement, the City Council has placed the following industrial annexation request on the November ballot.

Measure 02-66: Annexation of Moore Property

The Moore Annexation consists of approximately 15.52 acres of land zoned Industrial Park to the City of Philomath. The property to be annexed is generally located north Highway 20/34 at 3105 and 3335 Main Street, Philomath, (T12S-R5W-Section 7A, Tax Lots 1600, 1800, 2000 and 2200). The parcel lies entirely within Benton County. The developer's conceptual plan includes a variety of uses consistent with those allowed within an Industrial Park zone.

The applicant has submitted a general development plan identifying internal street access, industrial building sites, landscaping and preservation of existing drainage features and open spaces. City water service will be extended to the property to ensure that there is adequate water for fire protection. Sanitary sewer service is not being requested by the applicant at this time. All costs to extend/construct public and private infrastructure for future development of this property will be borne by the applicant.

Citizens desiring to learn more about this proposed development can review the application material on file at City Hall, the Philomath City Library, or on the Philomath City website at www.ci.philomath.or.us.



The conceptual plan associated with this annexation request may change. Any development proposal on this property shall require review and approval by the Planning Commission at a public hearing. Any future owner of this property who may propose a different development plan must pass through the same review process and public hearing. The City is not speaking in favor or against this conceptual plan.

New Face at the Philomath PD

The past couple of months have seen some personnel changes and some changes in assignments. In August, Carol Wigle retired after 21 years of service to the City. Also in August, Officer Ryan Keys left us after eight years and went to work for the Linn Co. Sheriff's Dept. All of us at Philomath Police Department wish them well.

Carol's replacement is Shelley Bartlow. She is a native Oregonian and was raised in Newport. Following high school, Shelley attended Northwest Nazarene University in Nampa Idaho, on a basketball scholarship. While at college, she met and married Jon Bartlow.

In 2001 the Bartlows moved to Philomath, where Jon began his career with Philomath High School and Shelley, until recently, sold real estate for Legend Homes. The Bartlows have four children whom all attend Philomath schools. Twin daughters Kara and Teri (18), and son Nolan (16), are at Philomath High, while daughter Andrea (14), attends Philomath Middle School. Shelley is looking forward to serving her community by working with the Philomath Police Department. Please join me in welcoming Shelley to the City.

On October 17, Officer Matt Moser will be graduating from the Oregon Police Academy. For the past 16 weeks, Matt has endured the challenges, both physical and mental, of living and studying at the police academy. Matt is very anxious to graduate and start his career with the Philomath Police Department.



My Final Newsletter Article

By Mayor Chris Nusbaum

Wow! Six years have come and gone since I became Philomath's Mayor. By now all of you are aware I am leaving the Philomath Mayor's office at the end of this term to pursue some more lifetime goals. This will be my last City Newsletter as your Mayor.

We have been through a lot over the years. Our City is young in age (and spirit) compared to other municipalities within the region. Because so many wanted to live in the Pacific Northwest, it was our youthful generation that was forced to deal with growth issues in what seemed like all at once. We needed to make hard decisions that initially divided many in our community. I cannot express my gratitude to all of you who stood by city government. We got through Philomath's most turbulent growth time and have truly become a city of peace and harmony.

Philomath has taught me a lot in my six years as Mayor. I, along with our council, grew into the job. Our council is made up entirely of citizen volunteers. Each councilor is from a different part of the city. No one on our council has any agenda other than to serve the community. All on the current council have been relentless supporters of our city charter combined with clear and transparent government. The public process outlined in our city charter is the reason Philomath continues to provide services at full staff with state-of-the art equipment. *Our population as a whole can take credit for consistently lowering city property tax rates.*

Before I leave this office, I wanted to acknowledge one Philomath citizen who started the whole process of our current financial well being. That individual is (His Honor) former Philomath Mayor Van Hunsaker. Mayor Hunsaker was a champion of public process and saving for a rainy day. During his last term, some did not like the public process outcomes regarding controversial growth issues and turned frustrations toward Van. Guess what? I too have felt the frustration from those who (once again) do not agree with public process outcomes. Attacks on the Mayor's office go with the territory.

I just wanted to say that Van Hunsaker was truly a good Mayor and make sure that history reflects his contributions to today's success.

Our city employees run one of the most professional organizations I have witnessed over my lifetime. Day to day operations are completed with attention to detail and are cost efficient. Overall morale remains high and turnover low. I cannot say thank you loud enough to all city employees who keep the water treated & flowing, our streets safe and parks clean.

Even though I am leaving the Mayor's Office, my family is staying in Philomath. We enjoy participating in community events and like Philomath's small town feel. It has been exciting seeing my daughter grow with all of our children in Philomath schools and intramural sport programs. We enjoy the many social events of Philomath. I am looking forward to meeting more of you at our community festivals and competitions. We are truly a community of volunteers and on the right track.

Please continue your support toward our new Mayor and Council in 2009. Many council members will be returning as seasoned city leaders, some as rookies. If anyone wants to continue naysaying our city leadership, ignore them. Stay focused on all the wonderful things in our community. I am hopeful that our next Mayor will continue the tradition of providing us a newsletter article.

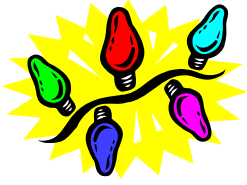
Thank you Philomath! The privilege of serving in leadership positions from my early days as PHS Class President, to serving as Philomath's Mayor will always be a part of me.



PUBLIC WORKS DIRECTOR STILL HOSPITALIZED

Beau Vencill continues to recover from the vehicle accident that severely injured both himself and his wife Sally. While Sally has been able to return to her home, Beau's injuries will require hospitalization and ongoing treatment for the foreseeable future.

The City would like to recognize Peggy Clark at Pioneer Telephone for her efforts in helping raise funds in the community to offset some of the family's costs during this time. If you would still like to make a donation to the family, you can do so directly at Wells Fargo Bank.



CHAMBER BRINGS CHRISTMAS TREE TO CITY

Philomath's new 27 foot giant sequoia is scheduled to arrive and be permanently planted November 7 in front of the Benton County Historical Museum. The Philomath Area Chamber of Commerce teamed up with the Benton County Historical Society last year to plant a sequoia in the center of the town. A temporary tree last year was donated by Starker Forest. Shonnard's Nursery worked with Benton County and Consumer Power to upright and decorate the tree, and on November 29 there was an official tree lighting ceremony kicking off a new annual tradition. Approximately 500 people gathered in front of the Museum enjoying hot beverages, cookies, and wonderful singing by a choir that was made up of a collective group from all of the area churches. **Everyone is invited to come and watch the planting of the new tree on November 7 at 4 pm.** E.D. Hughes will be on site with a large excavator to dig a hole that will be 10 feet in diameter and 6 feet deep.

This year's tree lighting ceremony has been scheduled for Tuesday, December 2, starting at 6 pm. The program this year will again include all of the churches plus a children's choir. We will have more tents, for the "just in case" weather that might arrive, so please, come join in the fun and celebrate with family, friends and neighbors in Philomath's new holiday tradition.

There is still some fundraising to be done. Shonnard's Nursery Florist and Landscape is leading a business challenge to help the Philomath Chamber of Commerce purchase our tree. Shonnard's is matching customer donations towards the tree up to \$500. Other businesses in town will soon be joining the challenge. The City of Philomath has also pledged to help purchase the tree. If you would like more information on the Christmas Tree Project, how the business challenge is going or how to make a tax deductible donation towards the tree, please visit the Chambers web site at www.philomathchamber.org.

INSIDE: For Your Consideration: Moore Annexation

Turkey Trouble