

Project Area: Main, Applegate, 13th St.

PHILOMATH DOWNTOWN SAFETY AND STREETScape PROJECT

Revised 01/13/2020 to include paving and ADA at intersections 7th St/Main St, 14th St/Main St and 14th St/Applegate St



MAIN ST (7th St to 10th St):

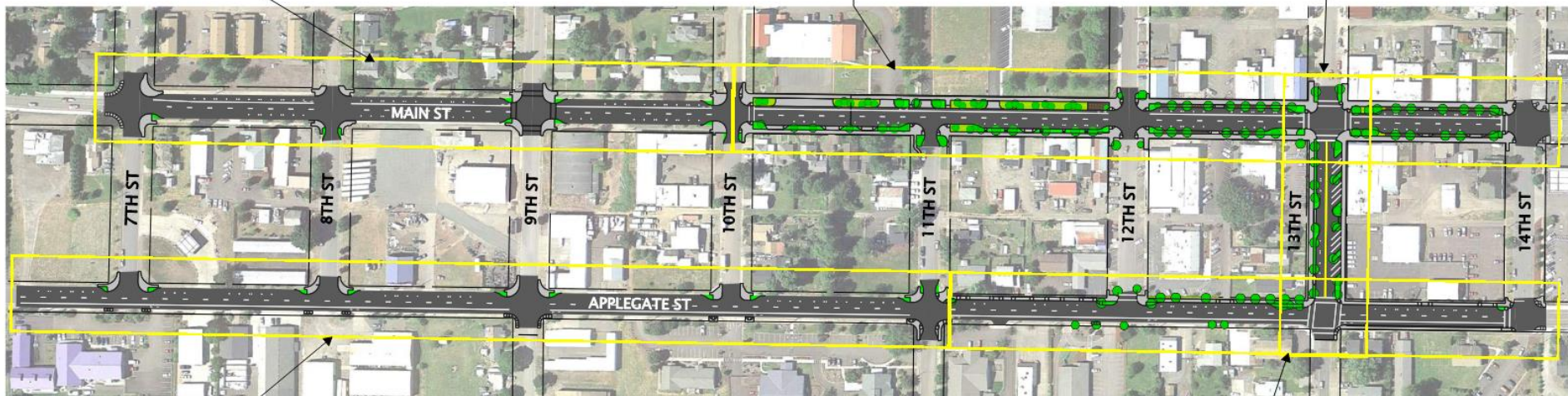
- 26" Full Depth Reconstruct (Travel Lanes Only)
- 2" Grind/Inlay (Bike Lanes and Shoulders)
- Traffic signal modification at 9th St and Main St
- Reconstruct ADA ramps only with minimum associated improvements. Include curb extensions.

MAIN ST (10th St to 14th St):

- 26" Full Depth Reconstruct - Full Width
- Construct full amenities per design:
 - Wider sidewalk and ADA improvements
 - Landscaping, decorative sidewalk pavers, benches, trash receptacles
 - Street lighting
 - Traffic signal replacement at 13th St & Main St
 - Drainage
 - Stormwater planters
 - Kiosk

13TH ST (Main St to Applegate St):

- 2" Grind/Inlay
- Construct full amenities per design:
 - Wider ADA compliant sidewalks
 - Landscaping, benches, trash receptacles
 - Electrical vehicle charging stations
 - Drainage



APPLEGATE ST (7th St to 11th St):

- 26" Full Depth Reconstruct (Travel Lanes Only)
- 2" Grind/Inlay (Bike Lanes and Shoulders)
- Reconstruct ADA ramps only with minimum associated improvements. Include curb extensions on north side of Applegate.

APPLEGATE ST (11th St to 14th St):

- 26" Full Depth Reconstruct (Travel Lanes Only)
- 2" Grind/Inlay (Bike Lanes and Shoulders)
- Construct full amenities per design:
 - Wider sidewalks (north side of Applegate) and ADA improvements
 - Landscaping, benches, trash receptacles
 - Street lighting
 - Traffic signal replacement at 13th St & Applegate St
 - Drainage
 - Stormwater planter

NOTES:

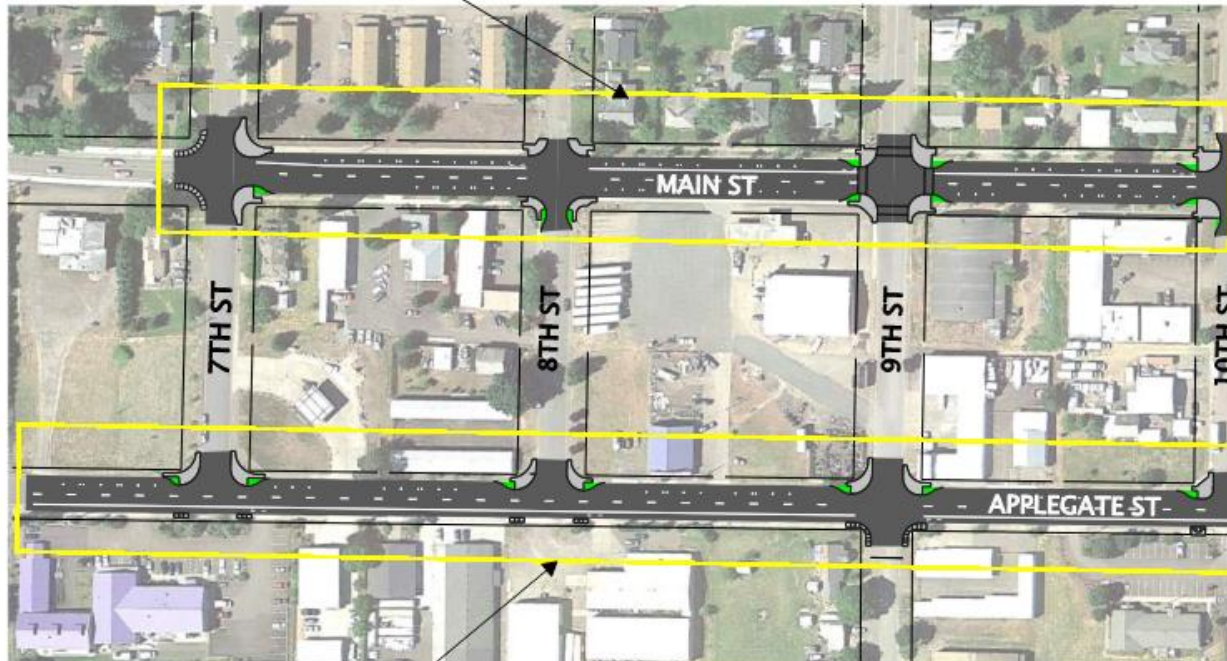
1. The project now includes federal funding. 100% treatment of the contributing impervious area will be required. An item is included in the estimate for an off-site treatment facility or proprietary on-site facilities (i.e. Filterra), TBD.



Project Area: Main, Applegate, 13th St.

MAIN ST (7th St to 10th St):

- 26" Full Depth Reconstruct (Travel Lanes Only)
- 2" Grind/Inlay (Bike Lanes and Shoulders)
- Traffic signal modification at 9th St and Main St
- Reconstruct ADA ramps only with minimum associated improvements. Include curb extensions.



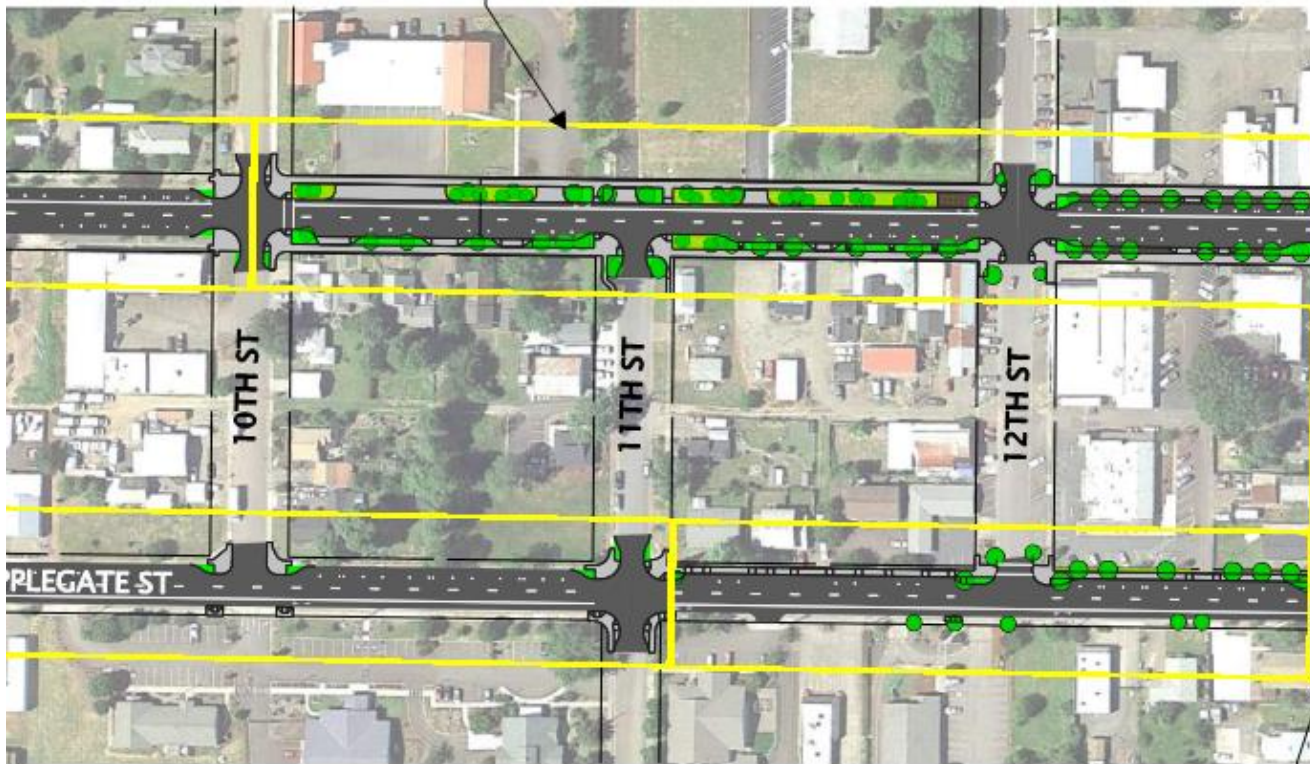
APPLEGATE ST (7th St to 11th St):

- 26" Full Depth Reconstruct (Travel Lanes Only)
- 2" Grind/Inlay (Bike Lanes and Shoulders)
- Reconstruct ADA ramps only with minimum associated improvements. Include curb extensions on north side of Applegate.

Project Area: Main, Applegate, 13th St.

MAIN ST (10th St to 14th St):

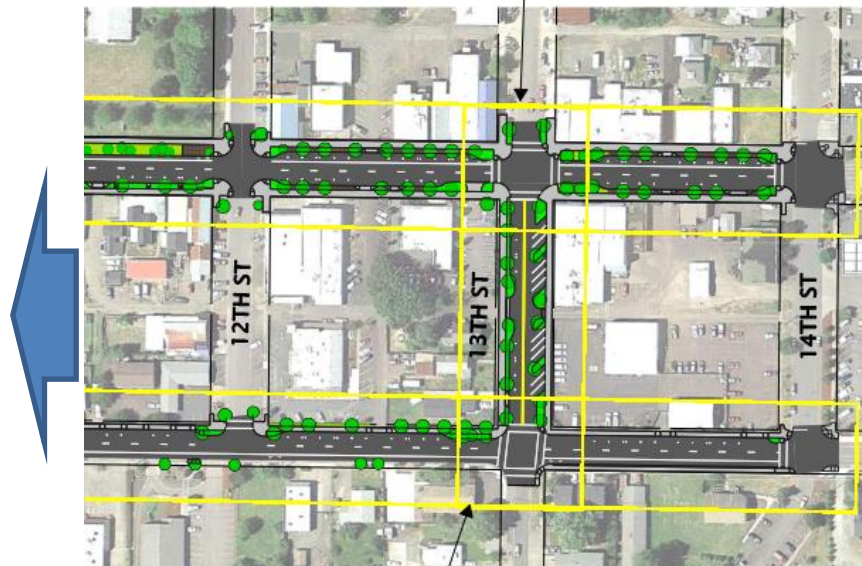
- 26" Full Depth Reconstruct - Full Width
- Construct full amenities per design:
 - Wider sidewalk and ADA improvements
 - Landscaping, decorative sidewalk pavers, benches, trash receptacles
 - Street lighting
 - Traffic signal replacement at 13th St & Main St
 - Drainage
 - Stormwater planters
 - Kiosk



Project Area: Main, Applegate, 13th St.

13TH ST (Main St to Applegate St):

- 2" Grind/Inlay
- Construct full amenities per design:
 - Wider ADA compliant sidewalks
 - Landscaping, benches, trash receptacles
 - Electrical vehicle charging stations
 - Drainage



APPLEGATE ST (11th St to 14th St):

- 26" Full Depth Reconstruct (Travel Lanes Only)
- 2" Grind/Inlay (Bike Lanes and Shoulders)
- Construct full amenities per design:
 - Wider sidewalks (north side of Applegate) and ADA improvements
 - Landscaping, benches, trash receptacles
 - Street lighting
 - Traffic signal replacement at 13th St & Applegate St
 - Drainage
 - Stormwater planter

Project Area: Main, Applegate, 13th St.



- Leverage Active Transportation Funds from ODOT add two-way cycle track from 15th Street to 13th Street
- Rapid Flash beacon crossing added
- Bike lane on 13th Street added